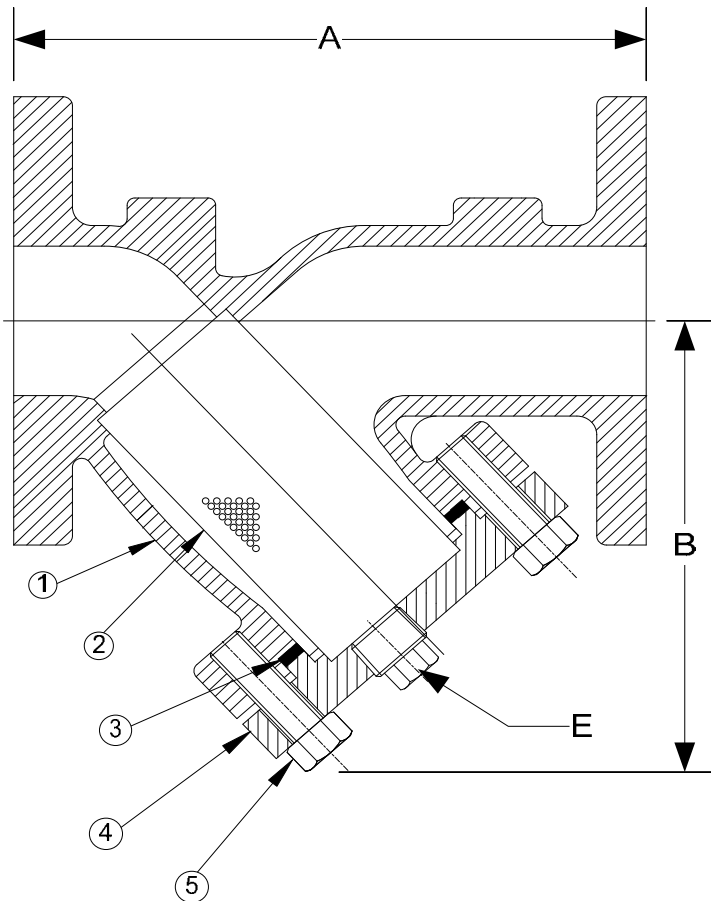


DRAWING NO.  
AL 90000(B62)



BODY PRESSURE & TEMPERATURE RATINGS - NON SHOCK		
NOM. RATING	MEDIA	½" to 12"
150# F.F.& D. (STANDARD FLANGE)	STEAM	150 PSI @ 406°F
	W.O.G.	225 PSI @ 150°F

PARTS LIST		
ITEM	DESCRIPTION	MATERIAL
1	BODY	CAST BRONZE (ASTM B 62, C83600)
2	SCREEN	STAINLESS STEEL (304)
3	GASKET	SPIRAL WOUND STAINLESS STEEL (304) -GRAPHITE FILLED
4	COVER	CAST BRONZE (ASTM B 62, C83600)
5	HEX HEAD CAP SCREWS	STAINLESS STEEL (ASTM A 193, GRADE B8)

Optional: Blow-off Plug, Brass

Product Number <sup>†</sup>	SIZE	DIMENSIONS (in)			COVER		WEIGHT (lbs)
		A	B	E	No. of Bolts	Size of Bolts	
1/22FFY-B2062P34-GB	1/2	5-7/8	3-1/4	3/8	4	3/8-16 x 1	7
3/42FFY-B2062P34-GB	3/4	7-3/8	3-3/4	1/2	4	3/8-16 x 1	13
12FFY-B2062P34-GB	1	7-3/8	4-5/16	1/2	4	3/8-16 x 1-3/8	13
11/42FFY-B2062P34-GB	1-1/4	6-5/8	4-5/16	1/2	4	3/8-16 x 1-3/8	17
11/22FFY-B2062P34-GB	1-1/2	6-11/16	4-5/16	1/2	4	3/8-16 x 1-3/8	17
22FFY-B2062P34-GB	2	7-7/8	5-1/4	1/2	4	1/2-13 x 1-1/2	28
21/22FFY-B2062P34-GB	2-1/2	9-3/4	6-1/2	1	4	5/8-11 x 1-3/4	38
32FFY-B2062P34-GB	3	10	7	1-1/4	4	5/8-11 x 1-3/4	64
42FFY-B2062P34-GB	4	12-1/8	8-1/4	1-1/2	4	5/8-11 x 2-3/16	84
52FFY-B2125P34-GB	5	15-1/2	11-1/4	2	8	5/8-11 x 2-3/16	139
62FFY-B2125P34-GB	6	18-1/2	13-1/2	2	8	3/4-10 x 2-3/8	160
82FFY-B2125P34-GB	8	24	16-1/2	2	12	3/4-10 x 2-1/2	296
102FFY-B2125P34-GB	10	27-5/8	19-3/8	2	12	3/4-10 x 2-5/8	408
122FFY-B2125P34-GB	12	32-1/2	22-5/8	2	16	3/4-10 x 2-7/8	798

<sup>†</sup>See "Style BA-7 Product Number Configuration" for additional options.

STANDARD SCREENS SUPPLIED

SIZE in	SCREEN GAGE	SCREEN PERFORMANCE			
		FOR STEAM in	OPEN AREA	FOR LIQUID in	OPEN AREA
1/2 to 4	28	3/64	33%	1/16	30%
5 to 10	24	3/64	33%	1/8	43%
12	24	1/16	30%	1/8	43%

Standard screens supplied are for liquid service, unless otherwise specified.

Options: Other perforations, meshes, and screen materials are available.

**KECKLEY**

3400 CLEVELAND SKOKIE ILLINOIS

DRAWING NO.  
AL 90000(B62)

DIMENSIONAL ASSEMBLY

PART NO.

½" to 12" 150# Flg Style BA-7

SCALE: NTS

DATE: 03/12/2015

MAT'L: (As Noted Above)

REQ. ---

DR. BY DSF