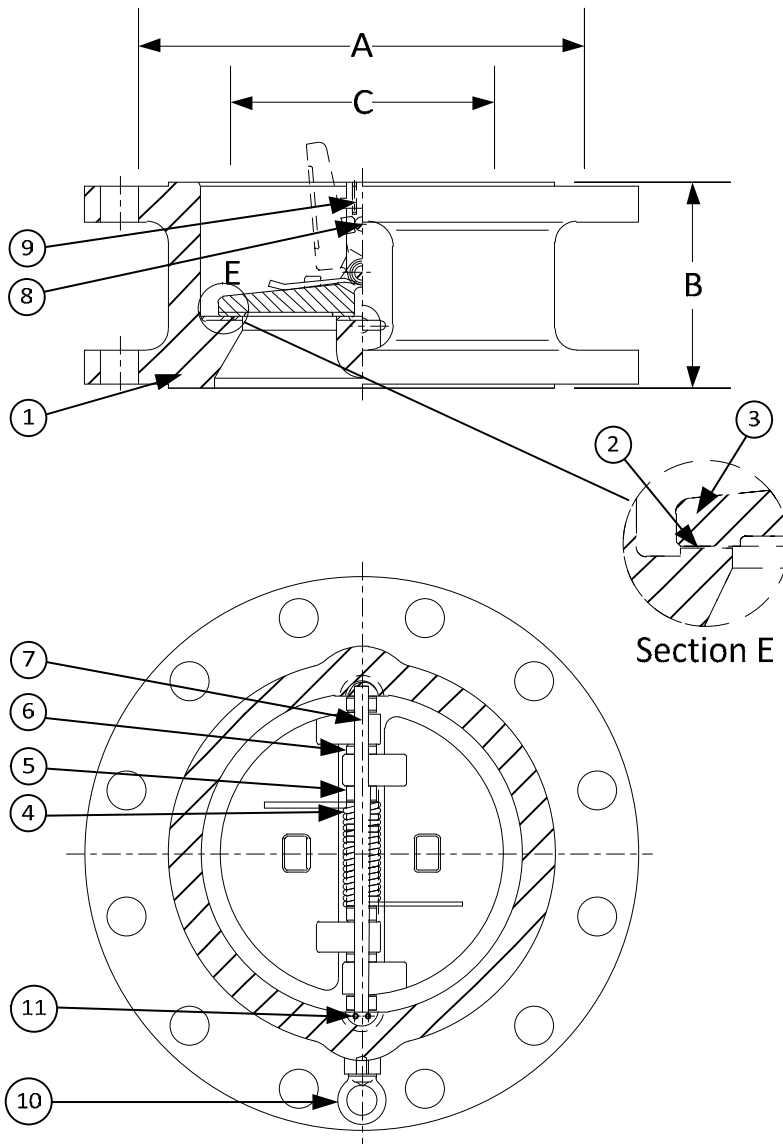


DRAWING NO.  
AL 105580

BODY PRESSURE & TEMPERATURE RATINGS - NON SHOCK		
NOM. RATING	MEDIA	12" to 24"
900# (WAFER DOUBLE FLANGE)	W.O.G.	2220 PSI @ 100°F



PARTS LIST		
ITEM	DESCRIPTION	MATERIAL
1	BODY	CARBON STEEL (ASTM A 216, GRADE WCB)
2	SEAT*	CARBON STEEL (ASTM A 216, GRADE WCB)
3	DISC	STAINLESS STEEL (ASTM A 351, GRADE CF8M)
4	SPRING	INCONEL X-750
5	SPRING PLATE	STAINLESS STEEL (ASTM A 182, GRADE F-316)
6	THRUST WASHER	STAINLESS STEEL (ASTM A 182, GRADE F-316)
7	HINGE PIN	STAINLESS STEEL (ASTM A 182, GRADE F-316)
8	STOP PIN	STAINLESS STEEL (ASTM A 182, GRADE F-316)
9	LOCATING PIECE	STAINLESS STEEL (ASTM A 182, GRADE F-316)
10	LIFTING LUG	CARBON STEEL
11	SCREW	STAINLESS STEEL (316)

\*Other Seat Materials Available in Viton, EPDM, PTFE, and Neoprene.

PRODUCT NUMBER <sup>†</sup>	SIZE	DIMENSIONS			WEIGHT
		A	B	C*	
12DF6R-CS-362IX	12	19-5/8	11-1/2	10-1/8	770
14DF6R-CS-362IX	14	20-1/2	14	11-1/2	1240
16DF6R-CS-362IX	16	22-5/8	15-1/8	12-7/8	1653
18DF6R-CS-362IX	18	25-1/8	17-3/4	14-1/2	2314
20DF6R-CS-362IX	20	27-1/2	17-3/4	18	2866
24DF6R-CS-362IX	24	33	19-1/2	21-1/2	4175

\*Minimum companion flange bore.

Available with thru-hole bolting or threaded bolt holes

<sup>†</sup>See "Style DF Product Number Configuration" for additional options.

**APPLICABLE STANDARDS**

• Design ASME B16.5, B16.34	• MSS SP - 6
• Conform to API 594 & 6D	• MSS SP - 25
• Testing API 598	• MSS SP - 55

**KECKLEY**

3400 CLEVELAND SKOKIE ILLINOIS

DIMENSIONAL ASSEMBLY

900# Retainerless Wafer Double Flange Body

Double Disc Check Valve

MAT'L: Cast Carbon Steel

REQ. ---

DRAWING NO.  
AL 105580

PART NO.  
DF6R-CS-362IX

SCALE: NTS

DATE: 07/01/2011

DR. BY DSF