

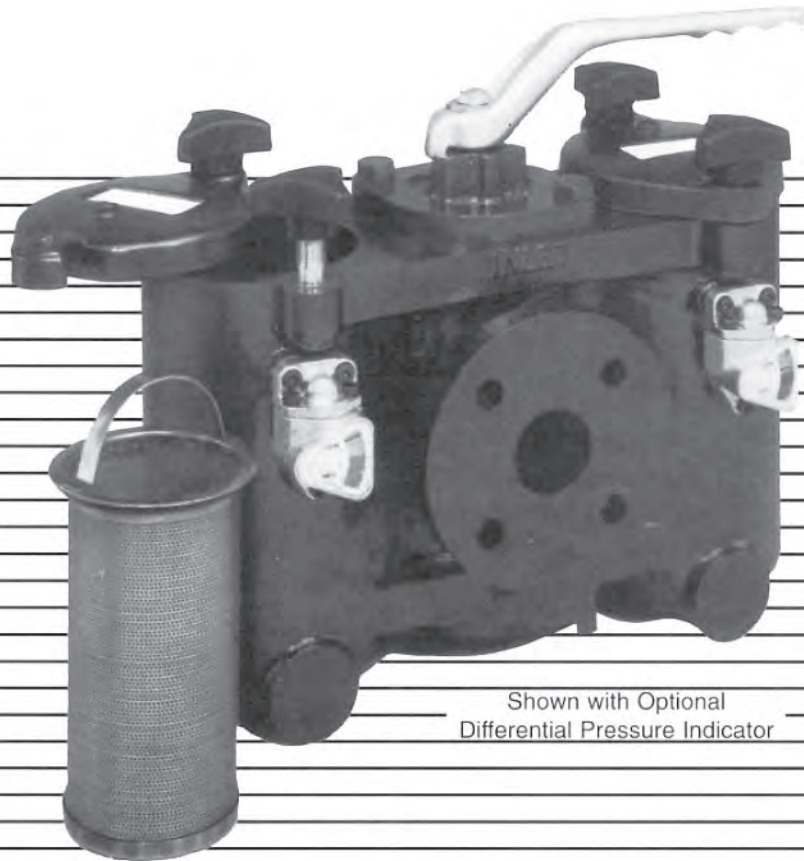


O&M-DPX98

# DUPLEX STRAINERS

**Installation, Operation, and  
Maintenance Instructions**

**NO QUESTION. WE HAVE THE ANSWERS.**



Shown with Optional  
Differential Pressure Indicator

## INSTALLATION

When fitting strainers into a pipeline, take care not to cause stress to the body of the strainer. Allow for adequate support of the weight of the strainer. Be sure to leave enough room for removal of the baskets for cleaning. The strainer faces are marked as Inlet and Outlet to ensure proper installation. These strainers are for horizontal flow only. All strainers are for pressure applications and are suitable for suction applications with a higher back up pressure. (header tank)

## OPERATION

Prior to start-up, check that the proper baskets are in place and that all covers are seal tight. Do not check baskets when strainer is pressurized. The strainer handle covers the chamber in use. The diverter valve always allows flow through the strainer. Although the valve will stop flow through one chamber, it is not a shut off valve.

Moving the handle 180 degrees changes the chamber in use. Do not open either chamber with the handle in the central position. It is not recommended to operate the strainer with the handle in the central position. There is no pressure drop advantage with this position.

## OPTIONAL EQUALIZING SYSTEM

A valve and connecting tubing are fitted between the two chambers. The valve must be opened before any attempt is made to move the diverter

handle. **WARNING:** The valve must be re-closed after changeover. NO attempt must be made to remove drain plug or open the basket chamber when the valve is open.

## CLEANING (see Diagram 1)

To clean Chamber A, move diverter handle to Position 3. As this strainer does not incorporate a tight shut off valve, the operator should be aware of possible leakage during cleaning. Carefully release drain plug in Chamber A allowing pressure to relieve before completely removing to empty the chamber.

Remove cover nuts, lift out the basket and remove the sediment within. Wash basket thoroughly and flush chamber if necessary. (Protect bottom of chamber below basket from contamination as this is the clean part of the strainer.)

Replace drain plug and washer. Check condition of O-rings in the cover and on the basket (if present) and replace if necessary. Place the basket in the chamber, making sure that the handle protrudes slightly above the strainer body. This guarantees a tight fitting basket when the cover is closed.

Use caution to lift cover before swinging it so as not to damage the O-ring. Turn the diverter handle to give partial flow into the cleaned chamber. Next, open the bleed screw to vent off air. Once vented, re-close the bleed screw and return the diverter handle to Position 3. If an equalizing valve is fitted, it can be used to vent the cleaned

chamber after the cover has been tightened. The valve must be closed after performing this operation. The cleaned chamber is now ready for use.

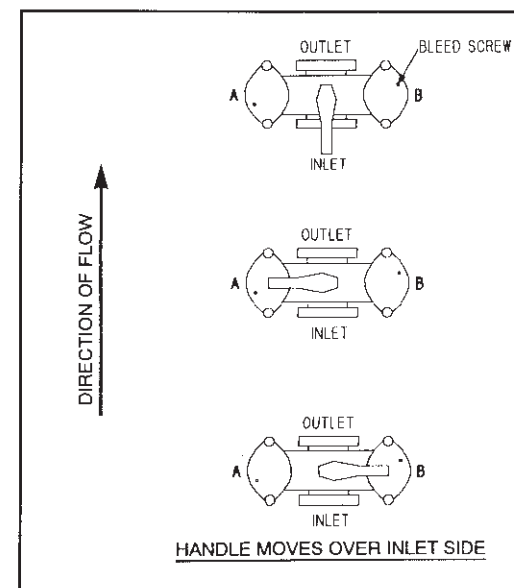
The same procedure applies to Chamber B except that the diverter handle is turned to Position 2.

Baskets have a safe differential pressure of approximately 30 PSI but it is recommended that you not exceed 20 PSI. This is because of the rapid rate of increase in pressure drop as the basket becomes clogged. Exceeding the differential pressure of 30 PSI can cause damage to the baskets.

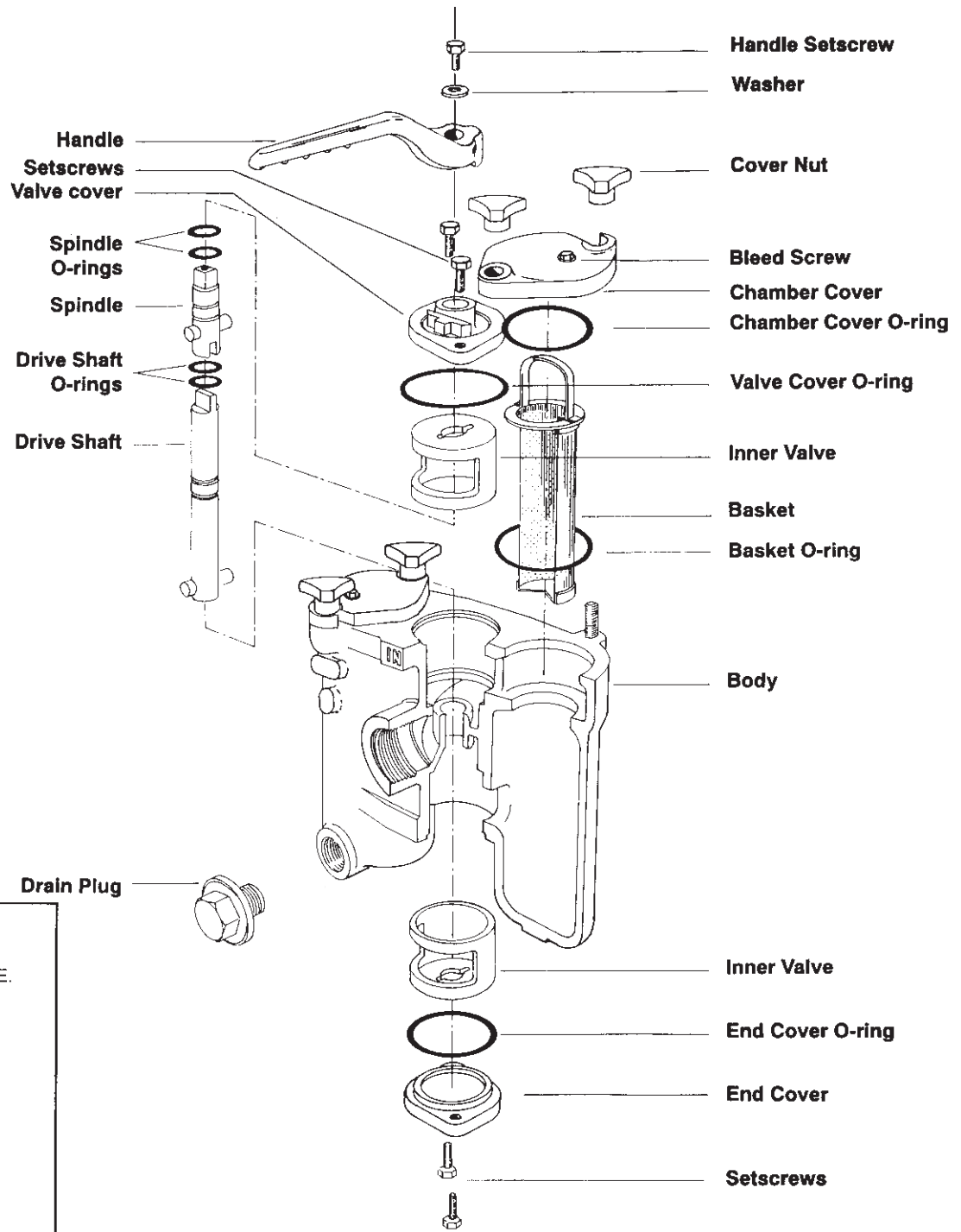
## REMOVAL

To remove a strainer, first isolate from the supply and any back-flow. Next, drain and disconnect.

## DIAGRAM 1



# PARTS LIST



## POSITION 1

BOTH CHAMBERS IN USE.  
DO NOT OPEN COVERS.

## POSITION 2

CHAMBER A IN USE.  
OPEN B FOR CLEANING.

## POSITION 3

CHAMBER B IN USE.  
OPEN A FOR CLEANING.

5 & 6" Size - Four basket design not shown.  
8" Size - Bolted cover.